

GADOLINIUM CELL LABELING REAGENT

BioPAL has developed Gado *CELLTrack*TM to aid researchers locate, track, and quantify implanted cells in *in vivo* systems using MRI technology. The first is a 30 nm gadolinium colloid (CL-20P02-2). As shown in the figure below, this reagent provides a strong T1 signal that is comparable to the same molar concentration as Gd-DTPA. This reagent has a neutral surface. The second is a 50 nm gadolinium colloid (CL-30P02-6) that has a negative surface. Like all our colloidal markers, these reagents can also be measured by electron microscopy (EM).

BioPAL's *IVST* reagents, which contain both gadolinium for MRI imaging, as well as additional isotopes for quantification *via* neutron activation can be found in the Neutron Activation section of our catalog and web site.

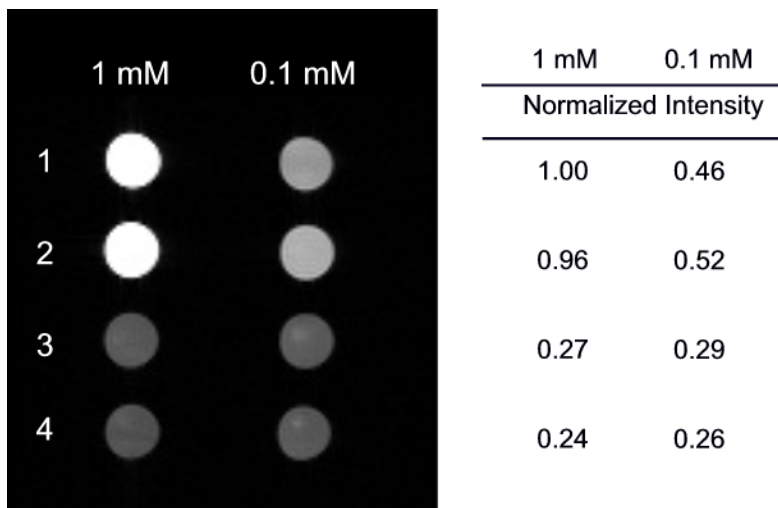


Figure: T1 weighted image from a series of compounds having the same molar concentration are shown on the left and normalized intensity values are tabulated on the right. Row 1 is Gd-DTPA, Row 2 is colloidal gadolinium, Row 3 is colloidal europium having the same size and matrix as colloidal gadolinium, Row 4 is PBS.

Colloidal Gadolinium Cell-Labeling Reagent

Catalog Number

| | |
|------------|---|
| CL-20P02-2 | Gado <i>CELLTrack</i>TM (Neutral)\$ 450.00 2.0 ml of 30 nm gadolinium colloid packaged in a 2 ml sealed serum bottle and at a concentration of 10 mg Gd/ml. Neutral surface. Assay Method: MRI and EM |
| CL-50P02-6 | Gado <i>CELLTrack</i>TM (-)\$ 450.00 2.0 ml of 50 nm gadolinium colloid packaged in a 2 ml sealed serum bottle and at a concentration of 10 mg Gd/ml. Negative surface. Assay Method: MRI and EM |

